

# Canon

imageRUNNER®  
9070



PRODUCTION  
SYSTEMS



meap  
POWERED BY

imageRUNNER®  
9070

PRODUCTION SYSTEMS

## CONDUCT YOUR BUSINESS WITHOUT BOUNDARIES

Free yourself from the limitations of yesterday's technology. Remove the barriers that restrict your ability to produce and distribute information at the time and place of need, and liberate your business with the Canon imageRUNNER® 9070.

Designed to seamlessly integrate with your core business applications, this new-generation imageRUNNER device bridges the hard-copy and digital workflows of your organization with access that is secure,\* easy, and instant. The imageRUNNER 9070 can serve as the origin of your business communications, or as the destination. Whichever the case, it will quickly become an indispensable part of your document production and distribution services.

The imageRUNNER 9070 is engineered to handle long run lengths and high volumes associated with large corporate departments, in-plants and corporate reprographic departments, commercial print facilities, and data centers. A heavy-duty design, high duty cycle, and advanced throughput and finishing capabilities make the imageRUNNER 9070 a perfect fit for your volume-intensive environments.



\*May require optional equipment.

## PRODUCE DOCUMENTS WITH MINIMUM EFFORT AND MAXIMUM EFFECT

### Uncompromising speed and image quality

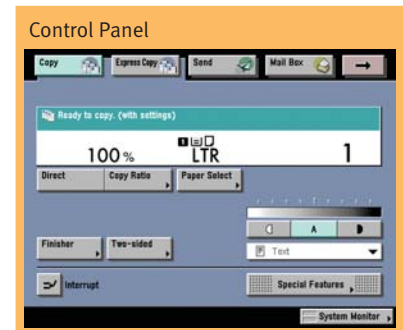
Even at its rated speed of 90 pages per minute (LTR), the imageRUNNER 9070 maintains consistent high image quality at 2400 x 600 dpi resolution, ensuring that your mission-critical jobs are produced on-time, every time.

### Ease-of-use

Whether you're an entry-level operator working between semesters or an experienced copy center professional, the imageRUNNER 9070 eliminates the guesswork from creating professionally finished documents with an easy-to-use control panel interface and intuitive print driver software. For all its technological merits, the imageRUNNER 9070 is surprisingly easy to operate and maintain; with minimum effort and maximum uptime.

### Professionally finished documents

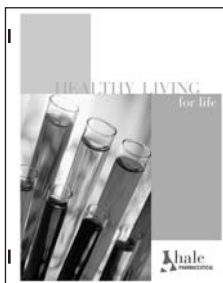
Document production is not complete until the output is *finished*. The imageRUNNER 9070 offers the most robust finishing capabilities in its class to deliver in-house finishing capabilities previously available only through outsourcing. Produce beautifully finished sets of documents, including church bulletins that are stitched, folded, and trimmed; course syllabi or business reports with printed tabs and preprinted color covers and inserts; or sales reports, complete with Z-folded spreadsheets.



Produce professionally finished documents.



### A Variety of Finishings\*



100-sheet Stapling



Cover Insertion and Booklet-making



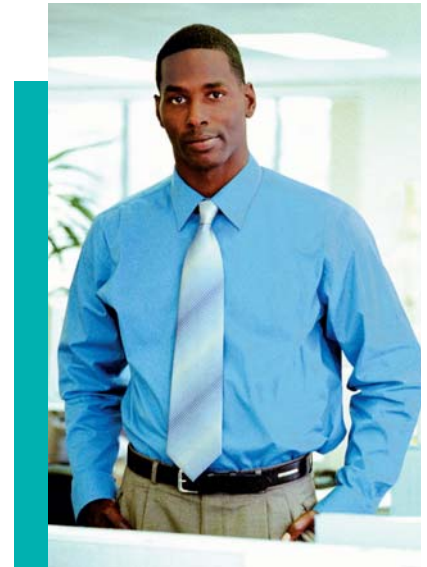
Two- or Three-hole Punching



Z-folding

\*May require optional equipment.

## EXCEPTIONAL COPY AND PRINT PERFORMANCE FOR YOUR HIGH-VOLUME REQUIREMENTS



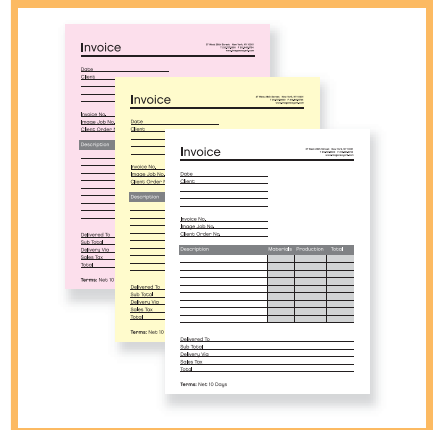
### Flexible Media Handling

With the imageRUNNER 9070, documents can be copied onto a wide variety of paper sizes and media types, including tabs, transparencies, card stock, and carbonless media specifically designed for Canon imageRUNNER systems. Whatever your printing needs may be, Canon has the specialty media available to meet them.

### Connectivity without Complications

Compatible with most of today's popular operating systems, the imageRUNNER 9070 is at home in virtually any network environment. Standard Ethernet connectivity provides ample data transfer speeds and free Cascade and Remote Copy\*\* functionality for environments with multiple device installations.

Create custom forms in seconds with Canon Carbonless Media.



### Cascade and Remote Copy\*\*

Cascade Copy



Remote Copy



Double system productivity and enable printing directly to the point-of-need by leveraging the power of other imageRUNNER 9070 devices installed on the network.

\*\*Available in 2005. Check with your local Authorized Canon Dealer for availability.

## A PRINT SOLUTION FOR EVERY ENVIRONMENT

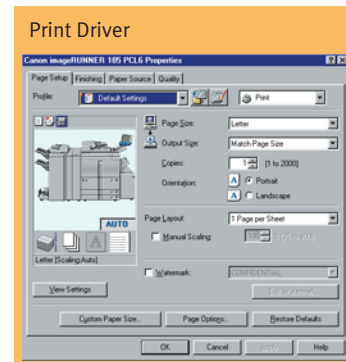
The **Canon Network Multi-PDL Printer Kit** makes use of the imageRUNNER 9070 internal processor to handle text-intensive print jobs where PCL data represents the bulk of jobs sent to the printer. GUI-enabled drivers for PCL, PostScript®, and UFR II are available.

The **Canon imagePASS-M3 Print Controller** is an external RIP designed by EFI to meet the needs of customers printing true Adobe® PostScript files, complex graphics, and variable data output. The imagePASS-M3 adds support for hot folders, and leverages EFI® Command WorkStation®, DocBuilder Pro™, Job Monitor, and Fiery® FreeFrom™ utilities.

**EFI MicroPress® iX** delivers powerful digital prepress and workflow management capabilities to single imageRUNNER 9070 installations. The MicroPress iX features post-RIP digital prepress capabilities to provide users with total independence from the original application and sophisticated authoring tools to make job and page-level changes.

**EFI MicroPress SX/DX/MX** offerings build on the iX with the capability of driving multiple Canon imageRUNNER and CLC systems from a single front-end solution. Every MicroPress model features an open and modular architecture for a painless upgrade path to new technology.

**I-O® Corp Host Solutions** seamlessly integrate a Canon imageRUNNER into an IBM host print environment. With fast and reliable conversions of SCS and IPDS data to PCL, I-O host print solutions can drive an imageRUNNER at rated speeds to handle the large print volumes typical of an AS/400 or mainframe environment—and they do so while utilizing the full finishing support of the imageRUNNER device.



### Value-added Printing Functionality

- **Secured Print** for document confidentiality.
- **Integration with imageWARE™ Publishing Manager** for drag-and-drop document building.
- **Direct Print** (PDF, TIFF, JPEG, and PS files) to print documents without opening the authoring application.
- **Bar-code printing\*\*** support for quick and accurate production of bar codes.
- **Web page printing\*\*** directly from the device control panel for users without access to a computer.

## ALL OUR BASES ARE COVERED

Allow Canon to lift the communication limitations of your business. Scan, convert, distribute, modify, compile, process, and print documents with minimum effort using Canon's suite of document management solutions.

**User Mail Boxes** offer a centralized document archival and distribution vehicle for individual or departmental use. Scan hard-copy documents or send jobs from a connected PC for storage, job-merging, duplication to other Mail Boxes, batch-printing, or for e-mail blasts to addresses stored on the imageRUNNER device.

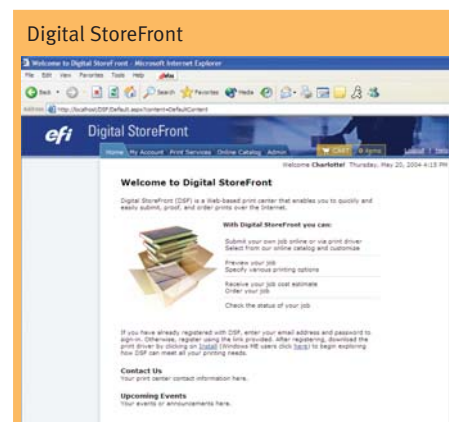
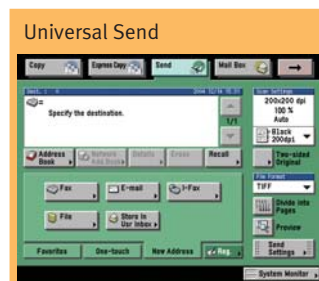
**Network ScanGear** is Canon's pull-scanning application available free-of-charge for print-enabled imageRUNNER 9070 systems. Capture documents from the ADF or platen glass for transmission over the network back to your desktop for a simple, cost-efficient way to convert, annotate, and archive your documents.

**Universal Send™** converts hard-copy documents for distribution to any network destination—individual or group e-mail addresses, Internet faxes, local Mail Boxes, network folders, and document management systems—in one simple operation. Users may select from several industry-standard file formats, take advantage of searchable PDF (OCR) and PDF encryption capabilities, and select recipients from up to five corporate e-mail servers. With URL Send, large files residing in a Mail Box can be

distributed as a URL link, greatly reducing network traffic and unclogging personal e-mail accounts.

**eCopy ShareScan OP™** integrates hard-copy operations into the workflow of enterprise software applications such as reporting, administration, document management, ERP, financials, and HR and customer management. eCopy ShareScan OP sets a new standard for simple, secure, and cost-effective distribution of electronic documents—all of which are accessible from the imageRUNNER 9070 control panel interface.

**EFI Digital StoreFront™** is a turnkey Web-based print center that simplifies print job submission and proofing over the Internet. Digital StoreFront automates proofing, estimating, and billing and reporting, and streamlines print center operations by seamlessly integrating the flow of data, while optimizing job turnaround by automating the flow of print jobs to Canon imageRUNNER and CLC systems.



Note: All features listed on this page are optional with the exception of the User Mail Boxes.

## YOUR BUSINESS IS UNIQUE AND SO IS THE imageRUNNER 9070



### Now You're in Complete Control

Don't let networked devices dictate how you conduct business. Canon offers all the tools you need to simplify imageRUNNER 9070 configurations, administration, access, and customization—regardless if you're supporting a single unit or a fleet of networked production systems.

Canon device management utilities are embodied within the Canon NetSpot® Suite and Remote UI™ utilities. Authentication features such as Department ID Mode provide the ability to track or limit device access to users assigned valid IDs and passwords. Simple Device Login (SDL) and Single Sign-on (SSO) functionalities allow users to enter existing personal IDs and passwords to gain system access.

### Security Features to Lock Down Sensitive Data

With the threat to data security on the rise, taking action to improve security measures is no longer an option. Protecting your intellectual property and other sensitive business documents is vital to your organization's success, and Canon has gone to great lengths in ensuring that every piece of data, printed or stored, on an imageRUNNER system is secure.

- Protect the integrity of your documents stored in imageRUNNER Mail Boxes with hard-drive encryption capabilities.
- Delete personal Address Book data and stored documents in a single step.
- Convert hard-copy originals to secure password-protected PDF files to prevent unauthorized document access or annotations.
- Track or limit access to the imageRUNNER 9070 by assigning personal IDs and passwords.
- Eliminate any chance of data theft by removing the hard-drive.\*\*

### Future Proof your Business Applications with MEAP®

With Canon's Java-based Multifunctional Embedded Application Platform (MEAP) architecture, businesses can acquire programs or integrate their own unique applications and services onto an imageRUNNER device. A Canon MEAP document management system can address issues specific to your industry. Create templates, style sheets, and image banks accessible from the imageRUNNER device, or design a kiosk-like interface for customer service or order-fulfillment transactions that can be accessed directly from the imageRUNNER control panel interface. The result is total integration of the imageRUNNER 9070 into your business infrastructure.



\*\*Available in 2005. Check with your local Authorized Canon Dealer for availability.



imageRUNNER®  
9070

**imageRUNNER 9070 Specifications**

**Type:** Digital, Multifunction Imaging System  
**Imaging System:** Laser Dry Electrostatic Transfer  
**Developing System:** Dry Monocomponent Toner Projection  
**Image Server Memory:** Standard 512MB RAM + 20GB HDD  
**Interface Connections:** RJ-45 (10/100Base-T)  
**First-copy Time:** 2.8 Seconds from Platen Glass  
**Warm-up Time:** 4.1 Seconds from ADF  
**Acceptable Originals:** 6 Minutes or Less  
**Max. Original Size:** 11" x 17" (Ledger)  
**Max. Copy Size:** 11" x 17" (Ledger)  
**Min. Copy Size:** 4-1/8" x 5-7/8"  
**Max. Mail Boxes Supported:** 100  
**Max. Copy Reservation:** 5 Jobs  
**Copy/Scanning Resolution:** 600 dpi x 600 dpi  
**Printing Resolution:** 1200 dpi x 600 dpi Interpolated  
**Half-tone:** 256 Gradations of Gray  
**Copy Speed:** 600 dpi x 600 dpi 2400 dpi x 600 dpi Interpolated  
**Duplexing:** 256 Gradations of Gray  
**Magnification Reduction/Enlargement:** 45 cpm (Letter)\*  
**Paper Supply Standard:** 25% to 400% in 1% Increments  
**Optional:** Dual Front-loading Trays (1,500 Sheets Each)  
**Multiple Copies:** Dual Front-loading Cassettes (550 Sheets Each)  
**Paper Weights:** 50-sheet Stack Bypass  
**Drum:** 3,500-sheet Paper Deck-N1 (Total: 7,650 Sheets)  
**Maximum Duty Cycle:** 1 to 9,999  
**Toner:** 17 lb. Bond to 110 lb. Index (All Paper Sources)  
**Amorphous Silicon – Estimated Yield:** 5,000,000 Impressions  
**Magnetic Negative Toner – Estimated Yield:** 500,000 Impressions per Month  
**36,600 Images**

**ACCESSORIES**  
**Automatic Document Feeder**  
**Acceptable Originals:** Statement to Ledger  
**Scanning Speed:** 80 ppm (Letter)  
**Capacity:** 100 Sheets (All Sizes/20 lb.)  
**Paper Weights:** 13 lb. Bond to 110 lb. Index

**Finisher-K1N/K2N (Optional)**

**Number of Trays:** 2 Trays  
**Tray Capacity:** 1,000 Sheets (All Sizes)  
**Top Tray:** Offset Stacking  
**Lower Tray:** 2,000 Sheets (Letter)  
**Staple Position:** 1 - Any Corner  
**Max. Stapling Capacity:** 100 Sheets (Letter/Statement)  
**Hole-punch (K2N Only):** 50 Sheets (Letter-R/Legal/11" x 17")  
**Saddle Finisher-K3N (Optional)**  
**Number of Trays:** 3 Trays  
**Tray Capacity:** 1,000 Sheets (All Sizes)  
**Top Tray:** Offset Stacking  
**Lower Tray:** 2,000 Sheets (Letter)  
**Saddle-stitch Tray:** 1,000 Sheets (11" x 17", Legal)  
**Staple Position:** 1 - Any Corner  
**Max. Stapling Capacity:** 100 Sheets (Letter/Statement)  
**Hole-punch:** 50 Sheets (Letter-R/Legal/11" x 17")  
**Saddle-stitch Capabilities:** 30 Sets  
**Saddle-stitch Paper Sizes:** 11" x 17", Letter  
**Stapling Capacity:** 15 Sheets (60 Pages)  
**Folding:** V-folding Standard

**Paper Deck-N1/S1 (Optional)**

**Paper Capacity:** 3,500 Sheets  
**Paper Size (N1):** Letter  
**Paper Size (S1):** Letter-R, Letter, Legal, 11" x 17"  
**Paper Weights:** 17 lb. Bond to 110 lb. Index

**Document Insertion Unit-B1▲ (Optional)**

**Paper Sizes:** Letter-R to 11" x 17"  
**Paper Weights:** 17 lb. Bond to 110 lb. Index  
**Feeder Capacity:** Letter, Letter-R: 100 Sheets  
 Legal, 11" x 17": 50 Sheets

**Paper Folding Unit-C1▲ (Optional)**

**Paper Sizes:** 11" x 17" Only  
**Paper Weights:** 17 lb. Bond to 22 lb. Bond  
**Fold Type:** Z-fold

**Booklet Trimmer-A1▲ (Optional)**

**Sheet Capacity:** 30 Sheets (60 Pages)  
**Stack Capacity:** 2,000 Pages  
**Dust Capacity:** 2,000 Pages

**Network Multi-PDL Printer Kit-F1 (Optional)**

**PDL Support:** PostScript 3 Emulation  
 PCL 5e, PCL 6, UFR II  
**Protocol Stacks:** Ethernet  
 IPX/SPX\*: 802.2, 802.3  
 Ethernet II, 802.2 SNAP  
 TCP/IP  
 AppleTalk\* Phase II  
**Network OS:** Novell® NetWare® v3.2, 4.1, 4.11, 4.2, 5, 5.1  
 Windows® 95/98/Me/2000/XP  
 Windows NT® 4.0, Windows 2003 Server  
 Solaris® 1.x, 2.5 or Later  
 Apple® System 7.5 or Higher  
 NDP5, Port 9100, IPP  
**Print Service:** Network ScanGear, Remote UI\*,  
 NetSpot, Universal Send™

**Canon imagePASS-M3 Print Controller▲ (Optional)**

**Hardware:** External Stand-alone Controller  
**Processor:** Intel® Celeron® 2.5GHz  
**Memory:** 256MB  
**Storage:** 40GB HDD  
**PDL Support:** Adobe PostScript 3  
 PCL 5e, PCL 6  
**Interface Connections:** RJ-45 (10/100/1000Base-T)  
 IEEE 1284 (Optional Adapter)  
 Ethernet  
 IPX/SPX: 802.2, 802.3  
 Ethernet II, 802.2 SNAP  
 TCP/IP  
**Network OS:** AppleTalk: 802.2 SNAP and AppleTalk Phase II  
 Novell NetWare v3.2, 4.1, 4.11, 4.2, 5, 5.1  
 Windows 98/Me/2000/XP  
 Windows NT 4.0  
 Solaris 2.5.1 or Later  
 Apple System 8.6, 9, 9.1, OSX  
 NDP5, Port 9100, IPP  
**Print Service:** Network ScanGear, Remote UI, NetSpot  
 (except Job Monitor), WebTools™  
**Additional Functions Standard:** Command WorkStation  
 Command WorkStation LE (only OSX)  
 Fiery Downloader\*  
 Impose  
 Hot Folders  
 Data Center IPDS Converter (TBD)  
 Parallel I/F Adapter IP-A1  
**Optional:** Impose  
 Hot Folders  
 Data Center IPDS Converter (TBD)  
 Parallel I/F Adapter IP-A1

**Universal Send Kit-C1**  
**Sending Method:** E-mail, I-fax, Database (Salutation), File Server  
 (IPX, FTR, SMB)  
**Address Book Capacity:** Maximum 1,800  
**File Format:** TIFF, PDF (OCR), MTIFF  
**Sending Size:** Statement to Ledger  
**Scan Density:** 200 dpi, 300 dpi, 400 dpi, 600 dpi

**Dimensions Table**

Product Name	Dimensions (H x W x D)	Weight	Power
imageRUNNER 9070 Main Unit	54-7/8" x 40-3/4" x 31-3/8" (1395mm x 1035mm x 795mm)	617 lb. (280kg)	208V, 60Hz, 12A
Finisher-K1N	39-1/4" x 26-1/4" x 29-1/8" (995mm x 667mm x 738mm)	141 lb. (64kg)	Directly from Main Unit
Finisher-K2N	39-1/4" x 26-1/4" x 29-1/8" (995mm x 667mm x 738mm)	145 lb. (66kg)	Directly from Main Unit
Saddle Finisher-K3N	39-1/4" x 31-5/8" x 29-1/8" (995mm x 803mm x 738mm)	279 lb. (127kg)	Directly from Main Unit
Paper Deck-N1	22-1/2" x 12-3/4" x 23" (570mm x 323mm x 583mm)	90.3 lb. (41kg)	Directly from Main Unit
Paper Deck-S1	22-5/8" x 23-3/8" x 24-1/2" (575mm x 593mm x 621mm)	101 lb. (46kg)	Directly from Main Unit
Document Insertion Unit-B1	5-5/8" x 22-1/8" x 23" (144mm x 561mm x 584mm) (with Auxiliary Tray Opened)	35 lb. (16kg)	Directly from Main Unit
Paper Folding Unit-C1	39-1/4" x 7-1/8" x 26-5/8" (995mm x 179mm x 675mm)	108 lb. (49kg)	Directly from Main Unit
Booklet Trimmer-A1	22-1/8" x 52" x 24-3/4" (562mm x 1321mm x 629mm)	149 lb. (68kg)	120V AC, 60Hz
imagePASS-M3 Print Controller	15-1/2" x 6-3/8" x 15-3/4" (394mm x 162mm x 400mm)	21 lb. (9.6kg)	110-240V, 1A

\*90 pages per minute when printing/copying letter-sized documents from paper sources other than the Stack Bypass and lower two Cassettes

▲The Document Insertion Unit-B1, the Paper Folding Unit-C1, and the Booklet Trimmer-A1 can only be used with the Saddle Finisher-K3N.

■The imageRUNNER 9070 is not ENERGY STAR® qualified when attached to the optional imagePASS-M3 Print Controller.

© 2005 Canon U.S.A., Inc. All rights reserved.

As an ENERGY STAR® Partner, Canon U.S.A., Inc. has determined that this product meets the ENERGY STAR® guidelines for energy efficiency, except when attached to the optional imagePASS-M3 Print Controller. ENERGY STAR and the ENERGY STAR certification mark are registered U.S. marks. Windows and Windows NT are registered trademarks of Microsoft Corporation in the United States and/or other countries. Adobe and PostScript are registered trademarks of Adobe Systems Incorporated in the United States and/or other countries. eCopy ShareScan is a trademark of eCopy, Inc. EFI, Fiery, MicroPress, and Command WorkStation are registered trademarks of Electronics for Imaging, Inc. in the U.S. Patent and Trademark Office and/or certain other foreign jurisdictions. Fiery Downloader, DocBuilder Pro, Digital StoreFront, WebTools, and FreeForm are trademarks of Electronics for Imaging, Inc. Apple and AppleTalk are registered trademarks of Apple Computer, Inc. Intel and Celeron are registered trademarks of Intel Corporation. Novell and NetWare are registered trademarks of Novell, Inc. in the United States and other countries. IPX/SPX is a trademark of Novell, Inc. Solaris is a trademark of Sun Microsystems, Inc. in the United States and other countries. Canon, IMAGERUNNER, NetSpot, MEAP, and Canon Know How are registered trademarks, and Universal Send and the GENUINE logo are trademarks of Canon Inc. in the United States and may also be registered trademarks or trademarks in other countries. Remote UI and IMAGEWARE are trademarks of Canon U.S.A., Inc. IMAGEANYWARE is a service mark of Canon U.S.A., Inc. in the United States. All other terms and product names may be trademarks or registered trademarks of their respective owners and are hereby acknowledged.

Specifications are subject to change without notice.

0049W781

0205-IR9070-PDF-NW



PRINTED ON RECYCLED PAPER IN THE U.S.A.

Canon KNOW HOW®

1-800-OK-CANON  
www.usa.canon.com

Canon U.S.A., Inc.  
One Canon Plaza  
Lake Success, NY 11042

