

Ricoh Aficio MP 3500/MP 4500 Series  
B/W Multifunctional Systems  
High-Performance Functionality

**RICOH**



**fast**



**flexible**



**productive**



# Ricoh Aficio MP 3500/MP 4500 Series

## MFP for the Value-driven Office

You need efficient, reliable office systems that put busy workgroups in control of an ever-increasing volume of documents—correspondence, financial reports, contracts and presentations.

Offering exceptional performance to meet these demands, the versatile RICOH® Aficio® MP 3500/MP 4500 digital systems support advanced network printing, scanning and faxing in one compact platform. And our industry-leading security technology protects your vital business information at every stage.



# FastFlexibleUnmatchedIntuitive

## Capture, Store and Distribute

For fast, convenient communication with colleagues, clients and customers, scan your documents to your desktop, network folder, e-mail or URL. For network-based information sharing and distribution, the TWAIN compliant Ricoh Aficio MP 3500/MP 4500 Series is ahead of the curve.

- Scan-to-Email—Easily search and send electronic documents for timely and accurate delivery with LDAP.
- Scan-to-Folder—Ideal way to archive and share large files with multiple clients.
- Support for common file formats (PDF, TIFF and JPEG) provides compatibility between varied operating systems and application software.

## Network Printing MFP for the Value-driven Office

The 466 MHz processor and 384 MB memory accelerate print performance, producing general-office documents with ease.

- For out-of-box network connectivity and fast data-transfer rates, the Ricoh Aficio MP 3500/MP 4500 Series is equipped with 10/100BaseTX Ethernet and USB 2.0 interfaces.
- You're in complete control of print output with Ricoh's innovative RPCS (Refined Printing Command Stream), PCL5e/6 and optional Adobe® PostScript® 3™ page description languages.
- Full compatibility with today's common platforms—Windows, Macintosh, AS/400, Linux and UNIX—ensures seamless integration in virtually any environment.
- PDF Direct Print lets you send PDF files directly to a printer without even opening the application, reducing network traffic and raising productivity. Ideal for printing scanned PDFs.

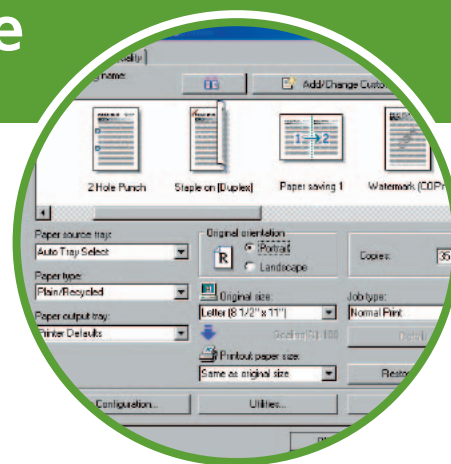
## Manage Documents with Confidence

Leverage the power of the Ricoh Aficio MP 3500/MP 4500 Series Document Server as a virtual document library for archival and print on-demand applications. Retrieved documents can be reprinted, refaxed, rescanned or downloaded to your computer for editing.

## Rein In Expenses and Speed Communications with Innovative Fax Technology

With a wide range of advanced fax communication features available, the Ricoh Aficio MP 3500/MP 4500 Series offers busy workgroups walk-up and desktop faxing convenience and economy.

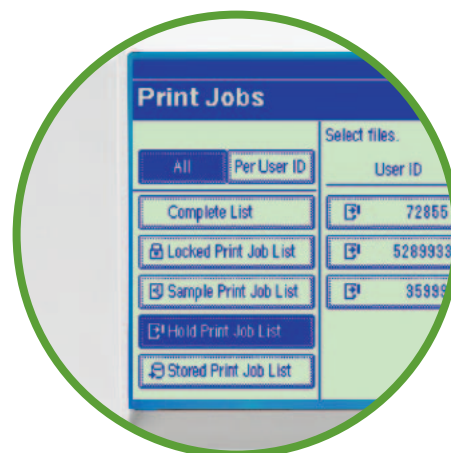
- Quickly deliver e-mail or hard copy via Internet Fax and IP Fax, functions that decrease operating costs by eliminating long-distance charges.
- Efficiently send electronic documents to a remote fax machine via LAN Fax, conveniently from your PC.
- The Ricoh Aficio MP 3500/MP 4500 Series provides traditional walk-up faxing via the high-speed 33.6 Kbps modem with standard JBIG compression. For maximum send/receive throughput, add up to two additional fax lines.
- Forward faxes directly to e-mail, hard disk or folder, ensuring that documents are properly routed.



RPCS is an easy-to-use, icon-based print driver that enables you to apply and save special settings, including duplexing and finishing, for one-click job processing.



Scan-to-URL improves information sharing in your organization, while minimizing network traffic.



Files can be password protected and held in memory until released by the owner for increased security. You can even print and delete multiple documents in a single operation.

# FaxPrintScanNetworkE-mail

## Install, Manage and Monitor with Ease

**Ricoh's comprehensive suite of utilities smooths daily system monitoring and simplifies installation.**

- Web Image Monitor enables you to set output parameters, check the status of toner and paper, and even reset the system from your desktop—all from your Web browser.
- On-demand Status E-mail Notification enables IT to remotely query the device for important system reports.
- With Auto E-mail Notification, the Ricoh Aficio MP 3500/MP 4500 Series sends a report to a designated e-mail address if, for instance, paper is low or out, to maximize uptime.

## Safeguard Network and Information Assets

**The Ricoh Aficio MP 3500/MP 4500 Series advanced security solutions help safeguard your network and the information it carries at all stages—input, management and output.**

- Use Windows/LDAP Authentication with your existing network login infrastructure to ensure that only those with a valid user name and password can access system functions.
- Deter photocopying of confidential documents with Unauthorized Copy Control, a requirement for any office responsible for creating and distributing restricted information.
- Protect temporary data stored on the hard drive with the Ricoh DataOverwriteSecurity System. Latent copy, print, scan, fax or Document Server file data is overwritten, making any effort to access and reconstruct residual data virtually impossible.
- With the Ricoh Removable Hard Drive, the Ricoh Aficio MP 3500/MP 4500 Series' hard drive can be removed and stored in a secure location.

## Anytime, Anywhere Document Retrieval

**documentmall**

The Ricoh DocumentMall™ is powerful document management software that is delivered as an on-demand service over the Internet. Seamless integration with the Ricoh Aficio MP 3500/MP 4500 Series allows you to upload scanned documents directly to DocumentMall™ and store critical documents in one secure location; manage documents online from the convenience of a PC; share documents with anyone at anytime; and protect documents with state-of-the-art security and facilities. DocumentMall™ addresses a wide range of document management needs—from simple document archiving and disaster readiness, to global sharing and collaboration.

## Open Architecture

**Embedded Software Architecture**

The Ricoh Embedded Software Architecture—an innovative Java (J2ME)-compatible software development platform—allows third-party development of key applications that run on the Ricoh Aficio MP 3500/MP 4500 Series, dramatically enhancing your organization's workflow. The Ricoh Aficio MP 3500/MP 4500 Series can easily be customized to meet your needs by controlling features such as the operation panel, printing, saving files and scanning.



## Your Environmental Partner

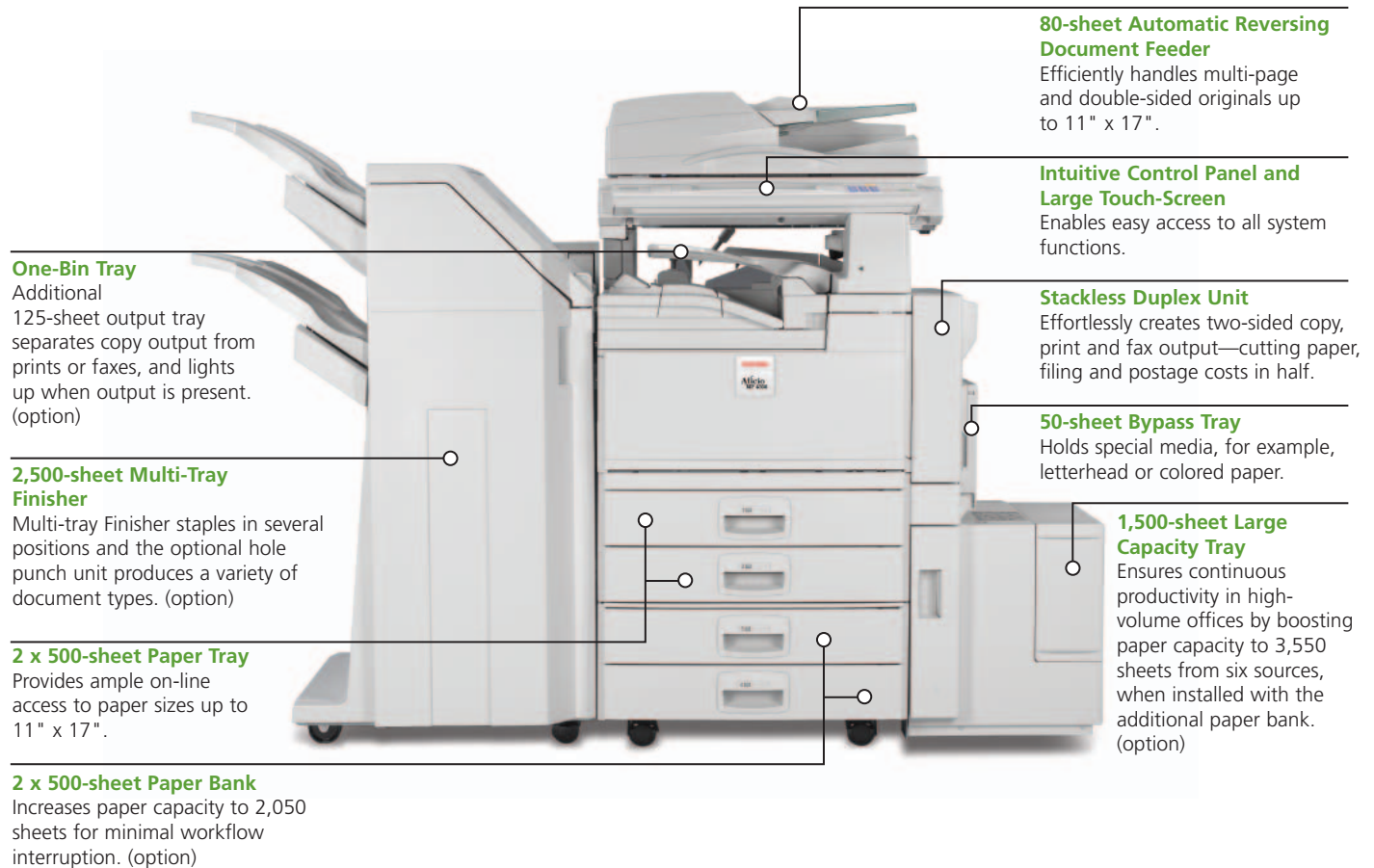


**Ricoh continues its long-standing commitment to developing office solutions with environmentally-friendly and superior energy- and supply-saving features, without compromising productivity, including:**

- Quick Start-Up (QSU) Technology
- Power-saving Sleep Mode
- Duplex and Combine Copy Modes
- Internal Toner Recycling Mechanism
- Low Noise Levels
- Minimal Ozone Emissions
- RoHS (Restriction of Hazardous Substances) Compliant

# Advanced Systems, that Deliver

Productivity soars with rapid 35/45 ppm and fast first-copy speeds as the Ricoh Aficio MP 3500/MP 4500 Series effortlessly outputs your most complex jobs.



Select the Configuration based on the requirements for your office



For an affordable printing solution with a flexible upgrade path for scanning and faxing



For productive printing and document handling



For total document needs in a space-saving design



For secure document storage, management and distribution via the Internet

# Ricoh Aficio MP 3500/MP 4500 Series

## System Specifications

**Aficio**<sup>®</sup>

### Engine/Copier Specifications

<b>Configuration</b>	Console
<b>Scanning Element</b>	Flatbed with Moving CCD Array Image Sensor
<b>Printing Process</b>	Twin Laser Beam Scanning & Electrophotographic printing Dry, Dual Component
<b>Toner</b>	128/384 MB RAM
<b>System Memory (std./max.)</b>	40 GB standard
<b>Hard Disk Drive</b>	Standard 80-sheet ARDF
<b>Document Feeder</b>	600 x 600 dpi
<b>Copy Resolution</b>	256 levels
<b>Grayscale</b>	Manual & Automatic
<b>Exposure Adjustment</b>	Up to 999
<b>Quantity Indicator</b>	Book/Sheet
<b>Original Type</b>	Up to 11" x 17"
<b>Maximum Original Size</b>	5.5" x 8.5" to 11" x 17"
<b>Copy Size</b>	Plain Paper, Transparencies
<b>Copy Type</b>	MP 3500: 15 seconds
<b>Warm-Up Time</b>	MP 4500: 20 seconds
<b>First Copy Speed</b>	MP 3500: 4.3 seconds
<b>Continuous Copying Speed</b>	MP 4500: 3.6 seconds
<b>Speed</b>	MP 3500: 35 copies/minute (LTR)
<b>Recovery Time (from Auto Off)</b>	MP 4500: 45 copies/minute (LTR)
<b>Power Source</b>	MP 3500: 10 seconds
<b>Dimensions</b>	MP 4500: 15 seconds
<b>Weight</b>	120V/60Hz/15A
<b>Standard Paper Capacity</b>	26.5" (W) x 34" (H) x 26" (D)
<b>Optional Paper Capacity</b>	205 lbs.
<b>Paper Size</b>	500 sheets x 2 trays
<b>Paper Weight</b>	50-sheet Bypass Tray
<b>Standard Output Tray Capacity</b>	500 sheets x 2 trays
<b>Reduction Ratios</b>	1,500-sheet Large Capacity Tray (LCT)
<b>Enlargement Ratios</b>	5.5" x 8.5" to 11" x 17"
<b>Zoom</b>	20 to 28 lb. Bond/64 to 105g/m <sup>2</sup> (Trays 1 & 2)
<b>Standard Features</b>	16 to 44 lb. Bond/52 to 163g/m <sup>2</sup> (Bypass)
	20 to 28 lb. Bond/64 to 105g/m <sup>2</sup> (Duplex)
	500 sheets (8.5" x 11")
	25%, 50%, 65%, 73%, 78%, 85%, 93%
	121%, 129%, 155%, 200%, 400%
	25% to 400% in 1% increments
	Auto Magnification, Auto Paper Select, Auto Tray Switch, Background Numbering, Booklet/Magazine Copy, Center/Border Erase, Combine Mode, Cover Insertion, Date Stamp, Directional Magnification, Document Server (3,000 file capacity), Electronic/Rotate Sorting, 10 Job Programs, Negative/Positive, OHP Slip Sheet, Page Number Stamp, Paper Designate, Series Copy, Pre-Set and User Stamps, Touch-Screen Control Panel, 100 User Codes (optional 500 max.)

### Scanner Specifications (Option)

<b>Scanning Speed</b>	Embedded Scanning 52 ipm (@ 200 dpi)
<b>Scanning Resolution</b>	600 dpi
<b>Grayscale</b>	256 Levels
<b>Scan Area</b>	Up to 11" x 17"
<b>Standard Interfaces</b>	10/100BaseTX Ethernet
<b>Optional Interfaces</b>	IEEE 802.11b Wireless LAN
<b>Protocol</b>	TCP/IP, SMTP, SMB, FTP, IPX, POP3, NCP, SNMP
<b>Memory Capacity</b>	384 MB Shared
<b>File Formats</b>	Single Page TIFF, JPEG, PDF, Multi-Page TIFF, PDF
<b>Standard Features</b>	Embedded Scan-to-Email, HDD, Folder, URL and TWAIN

### Printer Specifications (Option)

<b>Print Speed</b>	MP 3500: 35 ppm
<b>CPU</b>	MP 4500: 45 ppm
<b>Standard Interfaces</b>	RM7035C 466 MHz
<b>Optional Interfaces</b>	10/100BaseTX Ethernet, USB 2.0
	IEEE 802.11b Wireless LAN
	Bluetooth
	IEEE 1284
<b>Memory Capacity</b>	384 MB Shared
<b>Network Protocol</b>	TCP/IP, IPX/SPX, AppleTalk
<b>Network Operating Systems</b>	Windows 9x/NT4.0/2000/ME/XP/Server 2003, Netware, UNIX, Sun Solaris, HP-UX, SCO OpenServer, Red Hat Linux, IBM AIX, Mac 8.6 - 9.2x, 10.1+, SAP R/3, NDPS Gateway, IBM iSeries/AS/400 <sup>®</sup> using OS/400 Host Print Transform SmartDeviceMonitor, Web Image Monitor, Web SmartDeviceMonitor, DeskTopBinder V2 Lite
<b>Utilities</b>	PCL 5e/6 emulation* Ricoch RPCS Adobe PostScript 3 (optional)
<b>Page Description Languages</b>	Up to 600 dpi
<b>Print Resolution</b>	(2400 x 600 dpi with smoothing)
<b>Fonts for PCL 5e/6</b>	35 Intellifonts, 10 TrueType Fonts, 1 Bitmap, 13 International Fonts
<b>Fonts for PS3</b>	136 PostScript Fonts
<b>Standard Features</b>	Form Overlay, Watermarks, Spool Printing, Sample/Locked/Hold/ Stored Print, Encryption

### Fax Specifications (Option)

<b>Circuit Compatibility</b>	PSTN, PBX
<b>Resolution</b>	ITU-T G3
	200 x 200/100 dpi
	400 x 400 dpi (optional)
<b>Compression Method</b>	MH, MR, MMR, JBIG
<b>Scanning Speed</b>	0.43 seconds (LEF)
<b>Modem Speed</b>	33.6 Kbps with Auto fallback
<b>Transmission Speed</b>	G3: 3 seconds per page (MIMR Compression)
	G3: 2 seconds per page (JBIG Compression)
<b>Memory</b>	4 MB standard (320 pages)
	28 MB maximum (2,240 pages)
<b>Memory Backup</b>	1 hour
<b>Auto Dials</b>	2,000
<b>Group Dials</b>	100 (max. 500 numbers per group)
<b>ID Code Programming</b>	4 digits
<b>User Function Key</b>	3 keys
<b>Standard Features</b>	Auto Document (6), Book Transmission, Dual Access, Duplex Reception, Image Rotation
<b>Optional Features</b>	Simultaneous operation of up to 3 lines (G3 x 3); LAN-Fax Capability, Internet Faxing (T.37), IP Faxing (T.38), Fax Forwarding to E-mail/HDD/Folder with Scan/Print Installed

### PS530 Paper Bank (Option)

<b>Paper Size</b>	5.5" x 8.5" to 11" x 17"/ A5 to A3
<b>Paper Weight</b>	20 to 28 lb. Bond/60 to 105g/m <sup>2</sup>
<b>Paper Capacity</b>	2 x 500 sheets
<b>Dimensions</b>	21.3" (W) x 23.6" (D) x 10.6" (H)

### RT45 Large Capacity Tray (Option)

<b>Paper Size</b>	8.5" x 11"/A4
<b>Paper Weight</b>	20 to 28 lb. Bond/60 to 105g/m <sup>2</sup>
<b>Paper Capacity</b>	1,500 sheets
<b>Dimensions</b>	15.4" (W) x 19.7" (D) x 15.4" (H)

### One-Bin Tray PT330 (Option)

<b>Paper Size</b>	5.5" x 8.5" to 11" x 17"/ A5 to A3
-------------------	---------------------------------------

<b>Paper Weight</b>	16 to 28 lb. Bond/60 to 105g/m <sup>2</sup>
<b>Paper Capacity</b>	125 sheets

### SR790 Finisher (Option)

<b>Paper Size</b>	5.5" x 8.5" to 11" x 17"/ A6 to A3
<b>Paper Weight</b>	16 to 42 lb. Bond/60 to 157g/m <sup>2</sup>
<b>Stack Capacity</b>	Proof Tray: 250 sheets (8.5" x 11" or smaller); 50 sheets (8.5" x 14" or larger) Shift Tray: 1,000 sheets (8.5" x 11" or smaller); 500 sheets (8.5" x 14" or larger)
<b>Staple Capacity</b>	50 sheets (8.5" x 11"); 30 sheets (8.5" x 14" or larger)
<b>Staple Position</b>	3 positions (1 staple/2 positions; 2 staples/1 position)
<b>Dimensions</b>	20.7" (W) x 20.5" (D) x 31.1" (H)

### SR880 Multi-Tray Finisher (Option)

<b>Paper Size</b>	5.5" x 8.5" to 11" x 17"/ A6 to A3
<b>Paper Weight</b>	14 to 43 lb. Bond/52 to 163g/m <sup>2</sup>
<b>Stack Capacity</b>	Upper Tray: 500 sheets (8.5" x 11"); 250 sheets (8.5" x 14" or larger); 100 sheets (5.5" x 8.5") Lower Tray: 2,000 sheets (8.5" x 11"); 100 sheets (5.5" x 8.5"); 750 sheets (8.5" x 14" or larger)
<b>Staple Capacity</b>	50 sheets (8.5" x 11"); 30 sheets (8.5" x 14" or larger)
<b>Staple Position</b>	4 positions (1 staple/3 positions; 2 staples/1 position)
<b>Dimensions</b>	26.8" (W) x 24.4" (D) x 40.6" (H)

### SR890 Booklet Finisher (Option)

<b>Paper Size</b>	5.5" x 8.5" to 11" x 17"/ A5 to A3
<b>Paper Weight</b>	14 to 43 lb. Bond/52 to 163g/m <sup>2</sup>
<b>Stack Capacity</b>	Upper Tray: 150 sheets (8.5" x 11" or smaller); 75 sheets (8.5" x 14" or larger) Lower Tray: 1,000 sheets (8.5" x 11" or smaller); 500 sheets (8.5" x 14" or larger)
<b>Staple Capacity</b>	50 sheets (8.5" x 11" or smaller); 30 sheets (8.5" x 14" or larger)
<b>Booklet Tray Capacity</b>	10 sets (11 to 15 sheets) 15 sets (6 to 10 sheets) 25 sets (less than 5 sheets)
<b>Booklet Staple Capacity</b>	15 sheets
<b>Booklet Staple Position</b>	4 positions (1 staple/2 positions; 2 staples/2 positions; plus saddle stitch)
<b>Dimensions</b>	27.1" (W) x 24.5" (D) x 41.5" (H)

### 2/3 Hole Punch Kit Type 1045 (Option)

<b>Paper Weight</b>	14 to 43 lb. Bond/52 to 163g/m <sup>2</sup>
<b>Application</b>	For SR880 Multi-tray Finisher only

### Additional Options

Bridge Unit Type 2045, Scanner Accessibility Option Type 3045, Fax Type 3045, Handset Type 450, G3 Interface Type 3045, Removable Hard Drive Type 3045, Additional Removable Hard Drive Type 3045, Printer/Scanner Unit Type 4500, PostScript Type 4500, Key Counter Bracket Type H, DOSS Type D, File Format Converter Type B, Copy Data Security Unit Type A, FAC25 Cabinet, 32 MB Fax Memory, User Account Enhancement Kit Type E, IEEE 1284 Interface Board Type A, Bluetooth Interface Unit Type 3245, IEEE 802.11b Interface Unit Type H, Network Enhancement Kit Type 4500P, VM Card Type B

\*Option for Ricoh MP 3500P/MP 4500P configurations.

**RICOH**

www.ricoh-usa.com

Ricoh Corporation, Five Dedrick Place, West Caldwell, NJ 07080

Ricoh<sup>®</sup> and the Ricoh Logo are registered trademarks of Ricoh Company, Ltd. Windows<sup>®</sup> and Windows<sup>®</sup> 95/98/Me/NT4.0/2000/XP are registered trademarks of Microsoft Corporation. Macintosh<sup>®</sup>, Mac OS and AppleTalk<sup>®</sup> are registered trademarks of Apple Computer, Inc. Adobe<sup>®</sup> and PostScript<sup>®</sup> are registered trademarks of Adobe Systems, Inc. PCL<sup>®</sup> is a registered trademark of Hewlett-Packard Company. RPCS<sup>™</sup> is a trademark of Ricoh Company, Ltd. All other trademarks are the property of their respective owners. Printed in U.S.A. on recycled paper. Print speed may be affected by network, application or PC performance. Specifications and external appearances are subject to change without notice. Products are shown with optional features.

♻️ Printed in U.S.A. on recycled paper because Ricoh cares.



CA-0564